

徐工徐工 助您成功  
XCMG FOR YOUR SUCCESS



# XGC150-IA 履带起重机

CRAWLER CRANE



地址(Add): 中国江苏省徐州市金山桥经济开发区桃山路19号 邮编(Postal Code): 221004  
No.19 Taoshan Road, Economic development zone of jinshanjiao,Xuzhou,Jiangsu Province,China  
统一服务热线(Unified service hotline): 86 400-110-9999  
销售热线Sales Hotline  
销售电话(Sale Tel): 86 0516-87892094  
销售传真(Sale Fax): 86 0516-87892074  
电子邮件(E-mail): jxyld@xcmg.com  
服务质量投诉电话  
(Quality Supervision Tel): 86 0516-87892587

服务热线Service Hotline  
服务电话(Service Tel): 86 400-001-5678  
服务传真(Service Fax): 86 0516-87892080  
备件电话(Service Tel): 86 0516-87892086  
备件传真(Service Fax): 86 0516-87892083



欢迎访问徐工商城  
省心更省钱一站式



徐工集团工程机械股份有限公司  
1. 徐工集团 XCMG 品牌 工程机械  
2. 徐工集团 徐工 品牌 工程机械  
3. 徐工集团 徐工 品牌 工程机械

— 2020年02月版 —





## 01 运输、拆装优化设计

### Optimized design of transport and assembly/disassembly

- 配置齐全的自拆装系统（选配），可轻松实现：后配中央配重自拆装、履带梁自拆装和主臂底节臂自拆装。  
Fully equipped self-assembly/disassembly system (Optional) can easily achieve: rear counterweight self-assembly/disassembly, track frame self-assembly/disassembly, and boom base self-assembly/disassembly.
- 最大单件运输重量控制在29吨内，运输宽度不超过3米，能够满足全球无障碍运输要求。  
Largest single unit transport weight is controlled within 29t, transport width not more than 3m, so as to meet the transport requirement of global accessibility.
- 臂架套装运输设计，最大化利用运输空间，节省运输成本。  
Tower jib and fixed jib can be three-piece integrated transport, and transport design of inserted boom sections, maximize the use of transport space, and save transport costs.

## 02 结构设计更优化

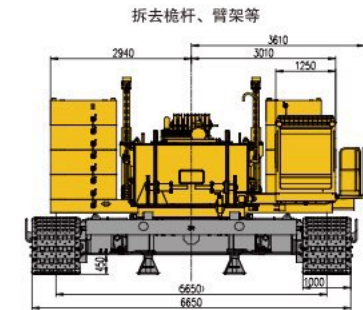
### More optimized structural design

- 上车采用大箱型结构设计，承载能力强、重量轻、刚性好。  
Superstructure is a large box-type structural design, with heavy load bearing capacity, light weight, and good rigidity.
- 副起升卷扬置于主臂底节臂，转台布置宽松，维护保养方便。  
Auxiliary hoisting winch is placed in boom base, with relaxed arrangement for turntable, easy maintenance.

## 主要技术参数 The Main Technical Parameters

项目Items	单位Unit	数值Data
最大额定起重量 Max. rated lifting capacity	主臂工况Main boom	t 150
	固定副臂工况Fixed jib	t 22
最大起重力矩 Max. load moment	臂端单滑轮工况 Boom single top	t·m 13.5
		t·m 840
尺寸参数 Size parameters	主臂长度Boom length	m 16 ~ 76
	主臂变幅角度Boom luffing angle	° -3 ~ 80
	固定副臂长度Fixed jib length	m 13 ~ 31
	主臂与固定副臂夹角Angle between boom and fixed jib	° 15、30
	臂端单滑轮长度 Boom single pulley arm length	m 1.4
速度参数 Speed parameters	起升机构最大单绳速度(空载、第五层) Hoist winch max. single line speed (no load, at 5th layer)	m/min 120
	主臂变幅机构最大单绳速度(空载、第三层) Boom luffing winch max. single line speed (no load, at 3rd layer)	m/min 2 × 45
	最大回转速度Max. swing speed	r/min 1.7
	最高行驶速度Max. travel speed	km/h 1.3
发动机 Engine	型号Model	— 上柴SC9DK270G3
	额定功率及转速 Rated output power and speed	kW/rpm 200/1800
	排放标准 Emission standard	— 非道路国III
	整机质量(基于150吨吊钩, 48t转台配重, 6t车身配重, 16m基本主臂) Total vehicle weight (with 150t hook block, 48t turntable counterweight, 6t car-body counterweight, and 16m basic boom)	t 133
	平均接地比压Mean ground pressure	MPa 0.093
	爬坡能力Grade ability	% 30
	运输状态单件最大质量Max. transport weight of single unit	t 36.2(可拆解至29t)
	运输状态单件最大尺寸(长×宽×高)Max. transport dimension of single unit(L×W×H)	m 11.0×3.0×3.3

注：1. 行走速度与回转速度基于水平光滑坚实地面，机重136t的理论计算值。 Pictures and data in this catalog will change with the update and modification of products, so please take the actual vehicle as reference.  
2. 本公司保留对技术参数的更新更改权，如有变更恕不另行通知。



# 09

## XGC150-IA履带起重机 XGC150-I A CRAWLER CRANE

- P10-P10 工况示意图  
Working Mode Illustration
- P11-P11 主臂工况臂节组合  
Boom Combinations
- P12-P12 主臂作业范围图  
Boom Working Area
- P13-P14 主臂作业范围图  
Boom Working Area
- P15-P16 主臂起重性能表  
Boom Lifting Load Chart
- P17-P18 臂端单滑轮起重性能表  
Boom Single Pulley Lifting Load Chart

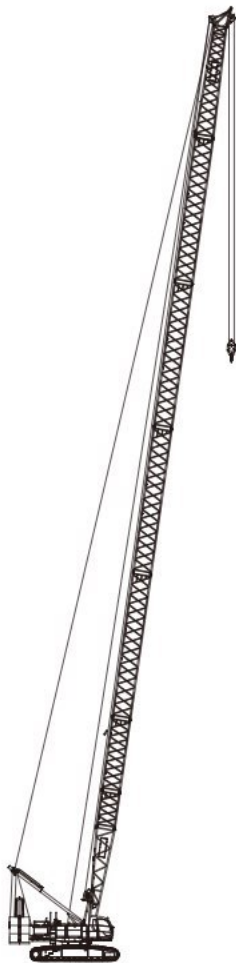


### 工况示意图 Working Mode Illustration

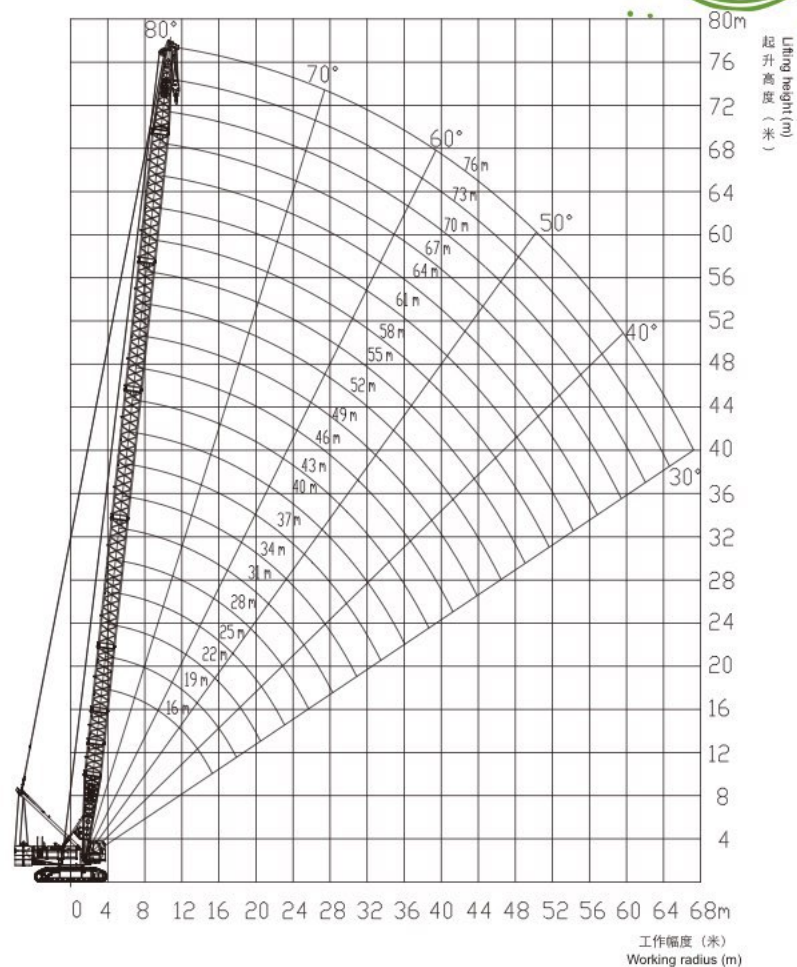


### 主臂工况臂节组合 Boom Combinations

臂长 Boom length	底节臂 Boom butt	中间节臂 Boom insert			顶节臂 Boom top
(m)	8m	3m	6m	12m	8m
16	1	0	0	0	1
19	1	1	0	0	1
22	1	0	1	0	1
25	1	1	1	0	1
28	1	0	0	1	1
31	1	1	0	1	1
34	1	0	1	1	1
37	1	1	1	1	1
40	1	0	0	2	1
43	1	1	0	2	1
46	1	0	1	2	1
49	1	1	1	2	1
52	1	0	0	3	1
55	1	1	0	3	1
58	1	0	1	3	1
61	1	1	1	3	1
64	1	0	0	4	1
67	1	1	0	4	1
70	1	0	1	4	1
73	1	1	1	4	1
76	1	2	1	4	1



### 主臂作业范围图 Boom Working Area





主臂起重性能表  
Boom Lifting Load Chart

幅度 Radius	臂长 (米) Boom length(m)										
	16	19	22	25	28	31	34	37	40	43	46
5	150										
6	140	130	126								
7	113.9	111.6	109.3	107	104.8						
8	93.3	91.7	90.1	88.5	86.9	85.3	83.7				
9	78.5	77.7	76.5	75.3	74.1	72.8	71.6	70.4	69.2		
10	66.9	67.1	66.4	65.4	64.4	63.4	62.5	61.4	60.5	59.5	58.5
12	51.4	51.6	51.7	51.6	50.9	50.2	49.5	48.8	48.1	47.3	46.6
14	41.5	41.6	41.7	41.7	41.7	41.4	40.8	40.2	39.7	39.1	38.5
16		34.7	34.8	34.7	34.7	34.6	34.6	34.1	33.6	33.1	32.6
18		29.5	29.7	29.6	29.6	29.5	29.4	29.3	29.1	28.6	28.2
20			25.7	25.7	25.7	25.6	25.5	25.4	25.3	25.1	24.7
22				22.6	22.6	22.5	22.4	22.3	22.2	22	21.9
24					20.1	20	19.9	19.8	19.7	19.5	19.4
26						17.9	17.8	17.7	17.6	17.4	17.3
28						16.1	16	15.9	15.8	15.7	15.5
30							14.5	14.4	14.3	14.2	14
32								13.1	13	12.9	12.7
34									11.9	11.7	11.6
36									10.9	10.7	10.6
38										9.8	9.7
40											8.9
配重	48+6	48+6	48+6	48+6	48+6	48+6	48+6	48+6	48+6	48+6	48+6

幅度 Radius	臂长 (米) Boom length(m)									
	49	52	55	58	61	64	67	70	73	76
12	45.9	46.2	45	40.1						
14	37.9	38.2	37.7	37.2	35.1	31.6	28.5			
16	32.1	32.4	32	31.6	31.1	30.7	27.8	25.1	22.8	20.2
18	27.7	28	27.6	27.2	26.8	26.5	26.1	24.4	22.2	19.8
20	24.3	24.5	24.1	23.8	23.5	23.1	22.8	22.4	21.5	19.5
22	21.5	21.6	21.4	21	20.7	20.4	20.1	19.8	19.5	19
24	19.2	19.1	18.9	18.8	18.5	18.2	17.9	17.6	17.3	17
26	17.1	17	16.8	16.7	16.5	16.3	16	15.7	15.4	15.1
28	15.4	15.2	15.1	14.9	14.7	14.6	14.4	14.1	13.9	13.6
30	13.9	13.7	13.6	13.4	13.2	13.1	12.9	12.7	12.5	12.2
32	12.6	12.4	12.3	12.1	11.9	11.8	11.6	11.4	11.2	11
34	11.4	11.3	11.1	11	10.8	10.6	10.5	10.3	10.1	9.9
36	10.4	10.3	10.1	10	9.8	9.6	9.5	9.3	9.1	8.9
38	9.5	9.4	9.2	9.1	8.9	8.7	8.6	8.4	8.2	8
40	8.7	8.6	8.4	8.3	8.1	8	7.8	7.6	7.4	7.2
42	8	7.9	7.7	7.6	7.4	7.2	7.1	6.9	6.7	6.5
44	7.4	7.2	7.1	6.9	6.7	6.6	6.4	6.2	6.1	5.9
46		6.7	6.5	6.3	6.2	6	5.8	5.7	5.5	5.3
48			6	5.8	5.6	5.5	5.3	5.1	4.9	4.8
50				5.3	5.1	5	4.8	4.6	4.4	4.3
52					4.7	4.5	4.4	4.2	4	3.8
54					4.3	4.1	3.9	3.8	3.6	3.4
56						3.7	3.5	3.4	3.2	3
58							3.2	3	2.8	2.6
60								2.7	2.5	2.3
62								2.4	2.2	2
64									1.9	1.7
配重	48+6	48+6	48+6	48+6	48+6	48+6	48+6	48+6	48+6	48+6

主臂起重性能表  
Boom Lifting Load Chart



幅度 Radius	主臂长度 Boom length(m)								
	22	25	28	31	34	37	40	43	43
8					95				
9				82.3	80.9	79.6	78.3		
10	75	73.9	72.8	71.7	70.6	69.5	68.5	67.4	67.4
12	58.4	58.4	57.7	56.9	56.1	55.3	54.5	53.7	53.7
14	47.2	47.2	47.2	46.9	46.3	45.7	45.1	44.5	44.5
16	39.5	39.4	39.4	39.3	39.2	38.8	38.3	37.8	37.8
18	33.7	33.7	33.7	33.6	33.5	33.4	33.2	32.7	32.7
20	29.3	29.3	29.3	29.2	29.1	29	28.9	28.7	28.7
22		25.8	25.8	25.7	25.6	25.5	25.4	25.3	25.3
24			23	22.9	22.8	22.7	22.6	22.4	22.4
26				20.5	20.5	20.3	20.2	20.1	20.1
28				18.6	18.5	18.3	18.3	18.1	18.1
30					16.8	16.7	16.6	16.4	16.4
32						15.2	15.1	15	15
34							13.8	13.7	13.7
36							12.7	12.6	12.6
38								11.6	11.6
40									
配重	58+6	58+6	58+6	58+6	58+6	58+6	58+6	58+6	58+6

幅度 Radius	主臂长度 Boom length(m)									
	49	52	55	58	61	64	67	70	73	76
12	52.2	50.6	45	40.1						
14	43.2	43.5	43	39.2	35.1	31.6	28.5			
16	36.7	37	36.5	36.1	34.2	30.8	27.8	25.1	22.8	20.2
18	31.8	32	31.6	31.2	30.8	30	27	24.4	22.2	19.8
20	27.9	28.1	27.7	27.4	27	26.6	26.3	23.8	21.5	19.5
22	24.8	24.8	24.6	24.3	23.9	23.6	23.3	22.9	20.9	19
24	22.1	22	21.8	21.7	21.4	21.1	20.8	20.5	20.1	18.4
26	19.8	19.7	19.5	19.3	19.2	19	18.7	18.4	18.1	17.8
28	17.8	17.7	17.5	17.4	17.2	17	16.9	16.6	16.3	16
30	16.1	16	15.8	15.7	15.5	15.3	15.2	15	14.8	14.5
32	14.7	14.5	14.4	14.2	14	13.9	13.7	13.5	13.4	13.2
34	13.4	13.3	13.1	12.9	12.8	12.6	12.4	12.3	12.1	11.9
36	12.3	12.1	12	11.8	11.6	11.5	11.3	11.1	11	10.8
38	11.3	11.2	11	10.8	10.6	10.5	10.3	10.1	10	9.8
40	10.4	10.3	10.1	9.9	9.8	9.6	9.4	9.3	9.1	8.9
42	9.6	9.5	9.3	9.1	9	8.8	8.6	8.5	8.3	8.1
44	8.9	8.7	8.6	8.4	8.2	8.1	7.9	7.7	7.6	7.4
46		8.1	7.9	7.8	7.6	7.4	7.3	7.1	6.9	6.7
48			7.3	7.2	7	6.8	6.7	6.5	6.3	6.1
50				6.6	6.4	6.3	6.1	5.9	5.7	5.6
52					5.9	5.8	5.6	5.4	5.2	5.1
54						5.5	5.3	5.1	5	4.8
56							4.9	4.7	4.5	4.3
58								4.3	4.1	3.9
60									3.8	3.6
62									3.4	3.2
64										2.9
66										2.4
配重	58+6	58+6	58+6	58+6	58+6	58+6	58+6	58+6	58+6	58+6

**臂端单滑轮起重性能表**  
**Boom Single Pulley**  
**Lifting Load Chart**



幅度 Radius	主臂长度 Boom length(m)									
	22	25	28	31	34	37	40	43	46	49
10						13.5	13.5			
12		13.5	13.5	13.5	13.5	13.5	13.5	13.5	13.5	13.5
14	13.5	13.5	13.5	13.5	13.5	13.5	13.5	13.5	13.5	13.5
16	13.5	13.5	13.5	13.5	13.5	13.5	13.5	13.5	13.5	13.5
18	13.5	13.5	13.5	13.5	13.5	13.5	13.5	13.5	13.5	13.5
20	13.5	13.5	13.5	13.5	13.5	13.5	13.5	13.5	13.5	13.5
22		13.5	13.5	13.5	13.5	13.5	13.5	13.5	13.5	13.5
24		13.5	13.5	13.5	13.5	13.5	13.5	13.5	13.5	13.5
26			13.5	13.5	13.5	13.5	13.5	13.5	13.5	13.5
28				13.5	13.5	13.5	13.5	13.5	13.5	13.5
30					13.5	13.5	13.5	13.5	13.5	13.5
32					13.5	13.5	13.5	13.5	13.5	13.5
34						13.5	13.5	13.5	13.5	13.4
36							12.7	12.6	12.5	12.3
38								11.6	11.5	11.3
40									10.7	10.4
42									9.8	9.6
44										8.9
配重	58+6	58+6	58+6	58+6	58+6	58+6	58+6	58+6	58+6	58+6

幅度 Radius	主臂长度 Boom length(m)									
	52	55	58	61	64	67	70	73	76	
12	13.5									
14	13.5	13.5	13.5	13.5	13.5					
16	13.5	13.5	13.5	13.5	13.5	13.5	13.5	13.5	13.5	13.5
18	13.5	13.5	13.5	13.5	13.5	13.5	13.5	13.5	13.5	13.5
20	13.5	13.5	13.5	13.5	13.5	13.5	13.5	13.5	13.5	13.5
22	13.5	13.5	13.5	13.5	13.5	13.5	13.5	13.5	13.5	13.5
24	13.5	13.5	13.5	13.5	13.5	13.5	13.5	13.5	13.5	13.5
26	13.5	13.5	13.5	13.5	13.5	13.5	13.5	13.5	13.5	13.5
28	13.5	13.5	13.5	13.5	13.5	13.5	13.5	13.5	13.5	13.5
30	13.5	13.5	13.5	13.5	13.5	13.5	13.5	13.5	13.5	13.5
32	13.5	13.5	13.5	13.5	13.5	13.5	13.5	13.5	13.4	13.2
34	13.3	13.1	13	12.8	12.7	12.5	12.3	12.1	12	
36	12.2	12	11.9	11.7	11.5	11.4	11.2	11	10.8	
38	11.2	11	10.9	10.7	10.5	10.4	10.2	10	9.8	
40	10.3	10.1	10	9.8	9.6	9.5	9.3	9.1	8.9	
42	9.5	9.3	9.2	9	8.8	8.7	8.5	8.3	8.1	
44	8.8	8.6	8.4	8.3	8.1	7.9	7.8	7.6	7.4	
46	8.1	7.9	7.8	7.6	7.5	7.3	7.1	6.9	6.7	
48		7.3	7.2	7	6.8	6.7	6.5	6.3	6.1	
50		6.8	6.6	6.4	6.3	6.1	5.9	5.8	5.6	
52			6.1	5.9	5.8	5.6	5.4	5.3	5.1	
54				5.5	5.3	5.1	5	4.8	4.6	
56					4.9	4.7	4.5	4.3	4.2	
58						4.5	4.3	4.1	3.9	3.8
60							3.9	3.7	3.6	3.4
62								3.4	3.2	3
64									2.9	2.7
66									2.6	2.4
68										2.1
配重	58+6	58+6	58+6	58+6	58+6	58+6	58+6	58+6	58+6	58+6

# 17

## XGC150-IA履带起重机 XGC150-I A CRAWLER CRANE

- P18-P18 固定副臂臂节组合  
Fixed Jib Combinations
- P19-P19 固定副臂作业范围图  
Fixed Jib Working Area
- P20-P25 固定副臂起重性能表  
Fixed Jib Lifting Load Chart
- P26-P29 主要零部件  
Main parts
- P30-P30 工作条件及注意  
Working conditions and Cautions

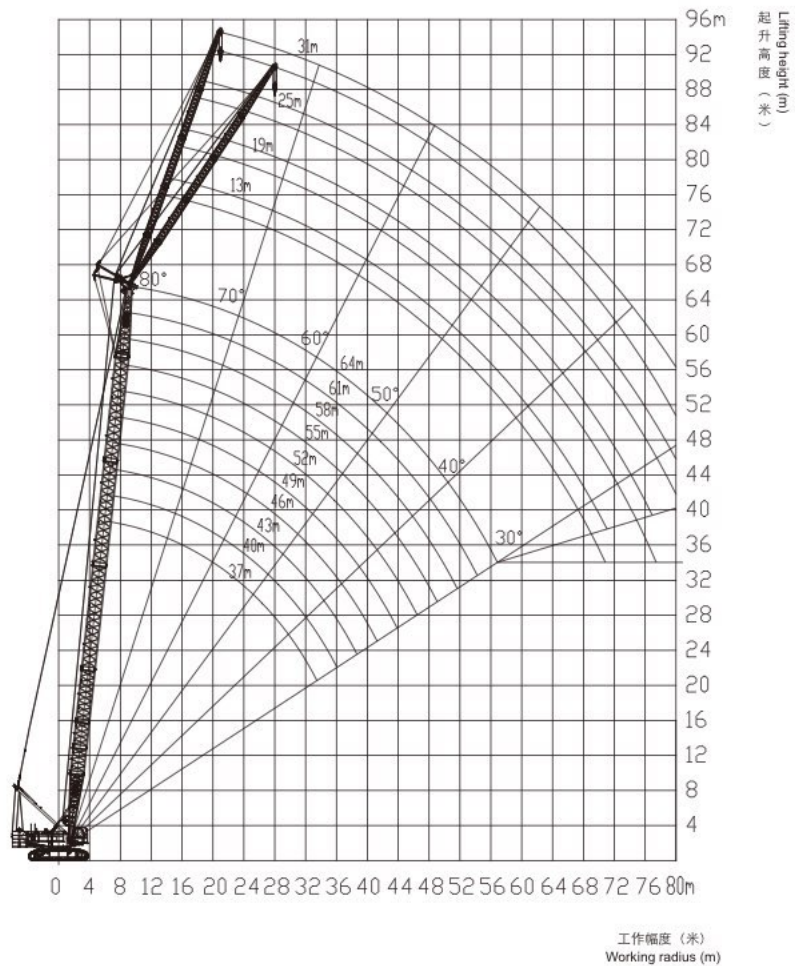
### 固定副臂臂节组合 Fixed Jib Combinations

副臂长度 Jib length (m)	13	19	25	31
6m底节臂Jib base	1	1	1	1
6m中间节Jib insert		1	2	3
7m顶节臂Jib top	1	1	1	1



固定副臂作业范围图  
Fixed Jib Working Area

固定副臂起重性能表  
Fixed Jib Lifting Load Chart



副臂夹角 Jib angle(°)	15											
主臂长 Boom length(m)	37				40				43			
副臂长 Jib length(m)	13	19	25	31	13	19	25	31	13	19	25	31
工作幅度 Working radius(m)												
14	22				22							
16	22				22				22			
18	21.6	15.3			21.5	15.4			22	15.4		
20	20.9	14.8	11.4		21.3	14.9	11.4		21.4	14.9		
22	20	14.3	11		20.6	14.4	11		20.8	14.5	11.1	
24	18.8	13.9	10.6	7.9	19.4	14	10.7	7.9	20	14.1	10.7	7.9
26	17.8	13.5	10.3	7.6	18.4	13.6	10.4	7.7	19	13.7	10.4	7.7
28	16.9	13.1	10	7.3	17.5	13.2	10.1	7.4	18.1	13.3	10.1	7.5
30	16.1	12.7	9.7	7	16.7	12.9	9.8	7.1	16.5	13	9.9	7.2
32	15.3	12.1	9.4	6.7	15.2	12.5	9.5	6.9	15	12.7	9.6	7
34	14	11.5	9.1	6.5	13.9	11.9	9.2	6.6	13.7	12.3	9.3	6.7
36	12.9	11	8.7	6.3	12.7	11.4	9	6.4	12.6	11.7	9.1	6.5
38	11.8	10.5	8.3	6.1	11.7	10.9	8.6	6.2	11.5	11.3	8.8	6.3
40	10.9	10.1	8	5.9	10.8	10.5	8.2	6	10.6	10.8	8.5	6.1
42	10.1	9.7	7.6	5.7	10	10.1	7.9	5.9	9.8	10.1	8.1	6
44	9.3	9.4	7.3	5.6	9.2	9.5	7.6	5.7	9.1	9.4	7.8	5.8
46	8.6	9	7	5.4	8.5	8.9	7.3	5.6	8.4	8.7	7.5	5.7
48		8.4	6.8	5.3	7.9	8.2	7	5.4	7.8	8.1	7.2	5.5
50		7.8	6.5	5.2		7.7	6.8	5.3	7.2	7.5	7	5.4
52		7.2	6.3	5.1		7.1	6.5	5.2		7	6.7	5.3
54			6.1	4.9		6.6	6.3	5.1		6.5	6.5	5.2
56			5.9	4.7			6.1	4.9		6	6.2	5.1
58				4.6			5.9	4.7			5.8	4.9
60				4.4			5.6	4.6			5.4	4.7
62				4.3				4.4			5	4.6
64								4.3				4.4
66								4.2				4.3
68												4.2
配重	58+6	58+6	58+6	58+6	58+6	58+6	58+6	58+6	58+6	58+6	58+6	58+6



**固定副臂起重性能表**  
Fixed Jib Lifting Load Chart

副臂夹角 Jib angle(°)	15											
	46				49				52			
主臂长 Boom length(m)												
副臂长 Jib length(m)	13	19	25	31	13	19	25	31	13	19	25	31
工作幅度 Working radius(m)												
16	22				22							
18	22				22				21.9			
20	21.5	14.9			21.5	14.9			21.4	14.9		
22	20.9	14.5	11.1		21	14.6	11		20.9	14.5		
24	20.4	14.1	10.8	7.9	20.5	14.2	10.8		20.5	14.2	10.7	
26	19.5	13.8	10.5	7.7	20	13.8	10.5	7.7	19.8	13.8	10.5	7.6
28	18.1	13.4	10.2	7.5	17.9	13.5	10.2	7.5	17.8	13.5	10.2	7.5
30	16.4	13.1	9.9	7.3	16.2	13.2	10	7.3	16	13.2	10	7.3
32	14.9	12.8	9.7	7.1	14.7	12.9	9.7	7.1	14.5	13	9.8	7.1
34	13.5	12.5	9.4	6.8	13.4	12.6	9.5	6.9	13.2	12.7	9.5	7
36	12.4	12.1	9.2	6.6	12.2	12.4	9.3	6.7	12.1	12.4	9.3	6.8
38	11.4	11.6	9	6.4	11.2	11.6	9.1	6.5	11.1	11.4	9.1	6.6
40	10.5	10.8	8.7	6.3	10.3	10.6	8.9	6.4	10.1	10.5	8.9	6.5
42	9.6	10	8.3	6.1	9.5	9.8	8.6	6.2	9.3	9.7	8.8	6.3
44	8.9	9.2	8	5.9	8.7	9.1	8.2	6	8.6	8.9	8.5	6.1
46	8.2	8.5	7.7	5.8	8	8.4	7.9	5.8	7.9	8.2	8.1	6
48	7.6	7.9	7.4	5.6	7.4	7.7	7.6	5.7	7.3	7.6	7.8	5.8
50	7	7.3	7.2	5.5	6.9	7.2	7.4	5.6	6.7	7	7.2	5.7
52	6.5	6.8	6.9	5.4	6.3	6.6	6.9	5.5	6.2	6.5	6.7	5.6
54	6	6.3	6.5	5.3	5.8	6.1	6.4	5.4	5.7	6	6.2	5.5
56		5.9	6.1	5.2	5.4	5.7	5.9	5.3	5.3	5.5	5.8	5.3
58		5.4	5.7	5.1		5.3	5.5	5.2	4.8	5.1	5.3	5.2
60			5.3	4.9		4.9	5.1	5		4.7	4.9	5.1
62			4.9	4.7		4.5	4.7	4.9		4.3	4.6	4.7
64			4.5	4.6			4.4	4.5		4	4.2	4.4
66				4.3			4	4.2			3.9	4
68				4			3.7	3.9			3.6	3.7
70				3.7				3.6			3.3	3.4
72								3.3				3.2
74												2.9
76												2.6
78												2.6
80												2.6
配重	58+6	58+6	58+6	58+6	58+6	58+6	58+6	58+6	58+6	58+6	58+6	58+6

副臂夹角 Jib angle(°)	15															
	55				58				61				64			
主臂长 Boom length(m)																
副臂长 Jib length(m)	13	19	25	31	13	19	25	31	13	19	25	31	13	19	25	31
工作幅度 Working radius(m)																
18	21.8				21.5				19.2							
20	21.3	14.8			21.2				19.1							16.8
22	20.9	14.5			20.8	14.4			19	14.2						16.7
24	20.4	14.2	10.6		20.4	14.1	10.5		18.9	14	10.3					16.6
26	19.5	13.8	10.4	7.6	19.2	13.8	10.3	7.5	18.8	13.7	10.2					16.5
28	17.6	13.5	10.2	7.4	17.4	13.5	10.2	7.4	17.1	13.5	10	7.3				16.3
30	15.9	13.3	10	7.3	15.7	13.3	10	7.2	15.5	13.2	9.9	7.1				15.3
32	14.4	13	9.8	7.1	14.2	13	9.8	7.1	14	13	9.7	7				13.9
34	13.1	12.7	9.6	7	12.9	12.8	9.6	7	12.7	12.7	9.6	6.9				12.6
36	11.9	12.3	9.4	6.8	11.7	12.1	9.4	6.8	11.6	12	9.4	6.8				11.4
38	10.9	11.3	9.2	6.7	10.7	11.1	9.2	6.7	10.5	10.9	9.2	6.7				10.4
40	10	10.3	9	6.5	9.8	10.2	9	6.6	9.6	10	9.1	6.5				9.5
42	9.1	9.5	8.8	6.4	9	9.3	8.9	6.4	8.8	9.2	8.9	6.4				8.6
44	8.4	8.7	8.7	6.2	8.2	8.6	8.7	6.3	8.1	8.4	8.7	6.3				7.9
46	7.7	8.1	8.3	6.1	7.6	7.9	8.1	6.2	7.4	7.7	8	6.2				7.2
48	7.1	7.4	7.7	5.9	6.9	7.3	7.5	6	6.8	7.1	7.3	6.1				6.6
50	6.5	6.8	7.1	5.8	6.4	6.7	6.9	5.9	6.2	6.5	6.7	6				6
52	6	6.3	6.5	5.7	5.8	6.2	6.4	5.8	5.7	6	6.2	5.8				5.5
54	5.5	5.8	6.1	5.5	5.4	5.7	5.9	5.6	5.2	5.5	5.7	5.7				5
56	5.1	5.4	5.6	5.4	4.9	5.2	5.4	5.5	4.7	5	5.3	5.4				4.6
58	4.7	4.9	5.2	5.3	4.5	4.8	5	5.2	4.3	4.6	4.8	5				4.2
60	4.3	4.6	4.8	4.9	4.1	4.4	4.6	4.8	3.9	4.2	4.4	4.6				3.8
62		4.2	4.4	4.5	3.7	4	4.2	4.4	3.6	3.8	4.1	4.2				3.4
64		3.8	4	4.2	3.4	3.7	3.9	4	3.2	3.5	3.7	3.9				3.1
66		3.5	3.7	3.9		3.3	3.6	3.7	2.9	3.2	3.4	3.5				2.7
68			3.4	3.6		3	3.2	3.4		2.9	3.1	3.2				2.4
70			3.1	3.3		2.7	2.9	3.1		2.6	2.8	2.9				2.4
72			2.8	3			2.7	2.8		2.3	2.5	2.6				2.1
74				2.7			2.4	2.6			2.2	2.4				1.9
76				2.5			2.1	2.3			2	2.1				1.8
78				2.2			2.1				1.7	1.9				1.6
80							1.8					1.7				1.7
配重	58+6	58+6	58+6	58+6	58+6	58+6	58+6	58+6	58+6	58+6	58+6	58+6	58+6	58+6	58+6	58+6



**固定副臂起重性能表**  
Fixed Jib Lifting Load Chart

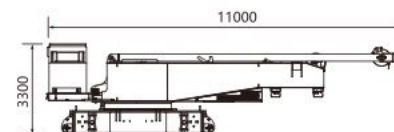
副臂夹角 Jib angle(°)	30											
	37				40				43			
主臂长 Boom length(m)												
副臂长 Jib length(m)	13	19	25	31	13	19	25	31	13	19	25	31
工作幅度 Working radius(m)												
18	17				17				17			
20	16.3				16.3				16.3			
22	15.6	10.4			15.6	10.5			15.6			
24	14.8	10.2			14.8	10.3			14.8	10.4		
26	13.7	10.1	7.8		13.7	10.1	7.9		13.7	10.2		
28	12.9	10	7.4		12.9	10	7.5		12.9	10.1	7.6	
30	12.1	9.7	7	5.6	12.1	9.7	7.1	5.6	12.1	9.8	7.2	5.7
32	11.3	9.3	6.7	5.5	11.3	9.3	6.8	5.5	11.4	9.4	6.9	5.6
34	10.7	8.9	6.5	5.3	10.8	8.9	6.6	5.3	10.9	9	6.7	5.4
36	10.1	8.5	6.3	5.1	10.1	8.5	6.4	5.2	10.2	8.5	6.5	5.2
38	9.6	8	6.1	5	9.7	8	6.2	5.1	9.8	8	6.3	5.1
40	9.4	7.5	5.9	4.8	9.5	7.5	6	4.9	9.6	7.6	6.1	4.9
42	9.3	7.3	5.7	4.6	9.4	7.3	5.8	4.7	9.5	7.4	5.9	4.8
44	9.1	6.9	5.5	4.4	9.2	6.9	5.6	4.5	9.2	7	5.7	4.6
46		6.7	5.4	4.3	8.6	6.8	5.5	4.3	8.5	6.9	5.6	4.4
48		6.6	5.2	4.1		6.7	5.3	4.2	7.8	6.8	5.4	4.3
50		6.5	5.1	4		6.6	5.2	4.1		6.7	5.3	4.1
52			5	3.9		6.5	5.1	3.9		6.6	5.2	4
54			4.9	3.7			4.9	3.8		6.5	5	3.9
56			4.8	3.6			4.8	3.7			4.9	3.8
58				3.5			4.8	3.6			4.8	3.7
60				3.5				3.5			4.8	3.6
62				3.4				3.4				3.5
64								3.4				3.4
66												3.4
配重	58+6	58+6	58+6	58+6	58+6	58+6	58+6	58+6	58+6	58+6	58+6	58+6

副臂夹角 Jib angle(°)	30											
	46				49				52			
主臂长 Boom length(m)												
副臂长 Jib length(m)	13	19	25	31	13	19	25	31	13	19	25	31
工作幅度 Working radius(m)												
20	16.3				16.3				16.4			
22	15.6				15.6				15.6			
24	14.8	10.4			14.8	10.5			14.8	10.6		
26	13.7	10.2			13.7	10.3			13.7	10.4		
28	12.9	10.1	7.7		12.9	10.2	7.8		12.9	10.2	7.9	
30	12.1	9.9	7.3		12.2	10	7.4		12.3	10.1	7.5	
32	11.5	9.4	7	5.6	11.6	9.5	7.1	5.6	11.7	9.5	7.2	5.6
34	11	9.1	6.8	5.4	11.1	9.2	6.9	5.4	11.2	9.2	7	5.4
36	10.3	8.5	6.6	5.3	10.4	8.5	6.7	5.3	10.5	8.6	6.8	5.3
38	9.9	8	6.4	5.1	10	8.1	6.5	5.2	10.1	8.2	6.6	5.2
40	9.7	7.7	6.2	5	9.8	7.7	6.3	5.1	9.9	7.8	6.4	5.1
42	9.6	7.5	6	4.8	9.6	7.5	6.1	4.9	9.5	7.6	6.2	5
44	9	7.1	5.8	4.7	8.9	7.2	5.9	4.7	8.8	7.4	6	4.8
46	8.3	7	5.7	4.5	8.2	7.1	5.8	4.6	8.1	7.3	5.9	4.6
48	7.7	6.9	5.5	4.4	7.5	7	5.6	4.4	7.4	7.1	5.7	4.5
50	7.1	6.8	5.4	4.2	6.9	6.9	5.5	4.3	6.8	7	5.5	4.4
52	6.5	6.7	5.2	4.1	6.4	6.8	5.3	4.2	6.3	6.7	5.4	4.2
54		6.4	5.1	4	5.9	6.3	5.2	4	5.8	6.2	5.3	4.1
56		5.9	5	3.8		5.8	5.1	3.9	5.3	5.7	5.2	4
58		5.5	4.9	3.7		5.3	5	3.8		5.2	5	3.9
60			4.8	3.6		4.9	4.9	3.7		4.8	4.9	3.8
62			4.7	3.6			4.8	3.6		4.4	4.7	3.7
64			4.6	3.5			4.5	3.5			4.4	3.6
66				3.4			4.1	3.5			4	3.5
68				3.3				3.4			3.7	3.4
70				3.3				3.3				3.4
72								3.3				3.3
74												3
配重	58+6	58+6	58+6	58+6	58+6	58+6	58+6	58+6	58+6	58+6	58+6	58+6

### 固定副臂起重性能表 Fixed Jib Lifting Load Chart

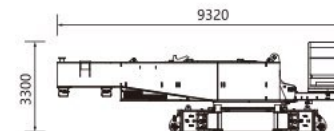
副臂夹角 Jib angle(°)	30																
主臂长 Boom length(m)	55				58				61				64				
副臂长 Jib length(m)	13	19	25	31	13	19	25	31	13	19	25	31	13	19	25	31	
工作幅度 Working radius(m)																	
20	16.3																
22	15.5				15.4					15.4				15.4			
24	14.8				14.8					14.8				14.8			
26	13.6	10.4			13.5	10.4				13.5	10.4			13.5	10.4		
28	12.8	10.2			12.7	10.2				12.7	10.2			12.7	10.2		
30	12.2	10.1	7.6		12.1	10.1	7.7			12.2	10.1	7.8		12.3	10.1	7.9	
32	11.7	9.5	7.3		11.7	9.6	7.4			11.8	9.6	7.4		11.9	9.6	7.5	
34	11.2	9.1	7.1	5.5	11.3	9.1	7.2	5.4		11.4	9	7.2	5.5	11.5	9	7.3	5.6
36	10.5	8.5	6.9	5.3	10.6	8.5	7	5.3		10.7	8.5	7	5.4	10.8	8.6	7.1	5.5
38	10.1	8.1	6.7	5.2	10.2	8.2	6.8	5.2		10.3	8.3	6.8	5.3	10.5	8.4	6.9	5.3
40	9.9	7.9	6.5	5.1	10	8	6.6	5.1		9.9	8.1	6.6	5.2	9.8	8.2	6.7	5.2
42	9.4	7.7	6.3	5	9.2	7.8	6.4	5		9.1	7.9	6.5	5.1	8.9	8	6.5	5.1
44	8.6	7.5	6.1	4.8	8.4	7.6	6.2	4.9		8.3	7.7	6.3	5	8.1	7.8	6.3	5
46	7.9	7.4	5.9	4.7	7.7	7.5	6	4.8		7.6	7.6	6.1	4.8	7.4	7.7	6.2	4.9
48	7.3	7.2	5.8	4.5	7.1	7.3	5.9	4.6		6.9	7.4	5.9	4.7	6.8	7.3	6	4.7
50	6.7	7.1	5.6	4.4	6.5	7	5.7	4.5		6.4	6.8	5.8	4.5	6.2	6.7	5.9	4.6
52	6.1	6.5	5.5	4.3	6	6.4	5.6	4.3		5.8	6.2	5.6	4.4	5.7	6.1	5.7	4.5
54	5.6	6	5.4	4.1	5.5	5.9	5.4	4.2		5.3	5.7	5.5	4.3	5.2	5.6	5.6	4.3
56	5.1	5.5	5.2	4	5	5.4	5.3	4.1		4.8	5.2	5.4	4.1	4.7	5.1	5.4	4.2
58	4.7	5.1	5.1	3.9	4.6	4.9	5.2	4		4.4	4.8	5.1	4	4.3	4.7	5	4.1
60		4.7	5	3.8	4.1	4.5	4.9	3.9	4		4.4	4.7	3.9	3.9	4.2	4.6	4
62		4.3	4.6	3.7	3.8	4.1	4.5	3.8	3.6	4		4.3	3.8	3.5	3.8	4.2	3.9
64		3.9	4.2	3.6		3.8	4.1	3.7	3.2	3.6	3.9	3.7	3.1	3.5	3.8	3.8	
66			3.9	3.5		3.4	3.7	3.6		3.3	3.6	3.7	2.8	3.1	3.4	3.7	
68			3.5	3.5		3.1	3.4	3.5		2.9	3.2	3.5		2.8	3.1	3.4	
70			3.2	3.4			3.1	3.3		2.6	2.9	3.2		2.5	2.8	3.1	
72				3.2			2.8	3			2.6	2.9		2.2	2.5	2.8	
74					2.9			2.5	2.7			2.3	2.6		2.2	2.5	
76				2.6				2.5				2	2.3		1.9	2.2	
78									2.2				2		1.7	1.9	
80															1.8	1.7	
配重	58+6	58+6	58+6	58+6	58+6	58+6	58+6	58+6	58+6	58+6	58+6	58+6	58+6	58+6	58+6	58+6	58+6

### 主要零部件 Main parts



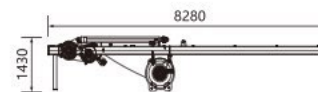
主机运输方案 A  
Basic machine transport plan A ×1

长(L)	11000mm
宽(W)	3000mm
高(H)	3300mm
重量(W)	36.2t



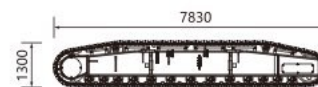
主机运输方案 B  
Basic machine transport plan B ×1

长(L)	9320mm
宽(W)	3000mm
高(H)	3300mm
重量(W)	29t



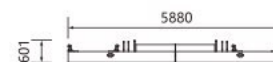
桅杆单独运输组件  
Mast transport parts ×1

长(L)	8280mm
宽(W)	1660mm
高(H)	1430mm
重量(W)	7.2t



履带架  
Track frame ×2

长(L)	7830mm
宽(W)	1400mm
高(H)	1300mm
重量(W)	16.2t

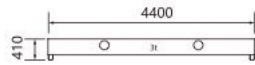


平衡重托盘  
Counterweight tray ×1

长(L)	5880mm
宽(W)	1800mm
高(H)	601mm
重量(W)	18t



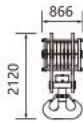
主要零部件  
Main parts



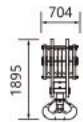
平衡重块 Counterweight	×2
长(L)	4400mm
宽(W)	1100mm
高(H)	410mm
重量(W)	3t



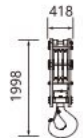
平衡重块 Counterweight	×8
长(L)	1800mm
宽(W)	1380mm
高(H)	566mm
重量(W)	5t



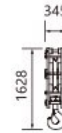
150t吊钩(选配) 150t hook block(Optional)	×1
长(L)	866mm
宽(W)	760mm
高(H)	2120mm
重量(W)	2.18t



100t吊钩 100t hook block	×1
长(L)	704mm
宽(W)	760mm
高(H)	1895mm
重量(W)	1.67t



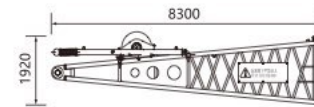
80t吊钩 80t hook block	×1
长(L)	418mm
宽(W)	760mm
高(H)	1998mm
重量(W)	0.95t



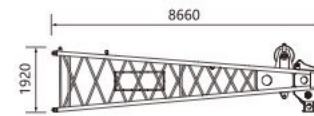
32t吊钩 32t hook block	×1
长(L)	354mm
宽(W)	760mm
高(H)	1628mm
重量(W)	0.7t



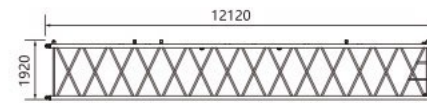
13.5t吊钩 13.5t hook block	×1
长(L)	485mm
宽(W)	485mm
高(H)	796mm
重量(W)	0.5t



主臂底节臂 Boom butt	×1
长(L)	8300mm
宽(W)	2020mm
高(H)	1920mm
重量(W)	4.75t



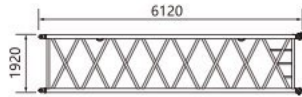
主臂顶节臂 Boom top	×1
长(L)	8660mm
宽(W)	2020mm
高(H)	1920mm
重量(W)	2.3t



主臂12m中间节 12m boom insert section	×4
长(L)	12120mm
宽(W)	2020mm
高(H)	1920mm
重量(W)	1.54t

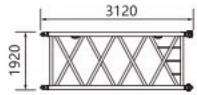


## 主要零部件 Main parts



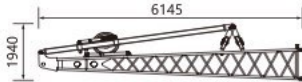
主臂6m中间节  
6m boom insert section ×1

长(L)	6120mm
宽(W)	2020mm
高(H)	1920mm
重量(W)	0.84t



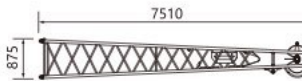
主臂3m中间节  
3m boom insert section ×2

长(L)	3120mm
宽(W)	2020mm
高(H)	1920mm
重量(W)	0.5t



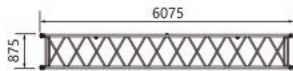
固定副臂底节  
Fixed jib butt ×1

长(L)	6145mm
宽(W)	1245mm
高(H)	1940mm
重量(W)	0.9t



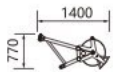
固定副臂顶节  
Fixed jib top ×1

长(L)	7510mm
宽(W)	1065mm
高(H)	875mm
重量(W)	0.47t



固定副臂中间节  
Fixed jib insert section ×3

长(L)	6075mm
宽(W)	1065mm
高(H)	875mm
重量(W)	0.25t



臂端滑轮  
Boom end pulley assembly ×1

长(L)	1400mm
宽(W)	1060mm
高(H)	770mm
重量(W)	0.16t

## 工作条件及注意 Working conditions and Cautions

### 工作条件及注意 Working conditions and Cautions

■ 本起重机的工况条件为：臂长≤50m时风速小于13.8m/s,臂长>50m时风速小于8.3m/s,环境温度-20℃~+40℃,地面倾斜度小于1%。  
The crane working conditions: boom length ≤ 50m when wind speed is less than 13.8m/s; boom length > 50m when wind speed is less than 8.3m/s; the ambient temperature is -20℃ ~ +40℃; and the ground gradient is less than 1%.

■ 表中额定起重量,是指在给定的臂架长度、工作半径条件下,重物自由悬挂,在坚实、平坦地面作业所能保证的最大起重量。作业者须视各种不良条件(如地面松软或不平、风力、侧面负荷、摆动作用、多台起重机合力起吊等)限制或降低起重机的起重量。

The rated lifting load in the chart are the maximum lifting capacity on the condition that the given working conditions are met and the load is in the state of free suspension and lifted slowly from the solid ground. Operators should limit or reduce lifting capacity according to different conditions (such as soft or uneven ground, wind force, side loading, oscillating action, several crane cooperate-lifting).

■ 表中额定起重量包括吊钩、钢丝绳和其他所有吊具的重量。

The rated lifting capacity in the chart includes the weight of main hook block, wire rope and all slings.

■ 表中没有列出额定值的空白区,不允许起重机用于该区域所对应的起重作业。

The blank area of the chart where no rated lifting load listed is regarded as non-operation area, so crawler crane is not allowed to carry out lifting operation in this area.

■ 吊钩及倍率的选取,在任何情况下,吊钩的选取必须满足吊钩的额定起重量大于或等于实际吊重量(包括钢丝绳及吊具等),倍率按下表选取:

Selection of hook block and parts of line In any case, the selection of hook block must satisfy that the hook block rated lifting load is more than or equal to the actual lifting load (including wire rope, slings and etc.).

吊钩倍率的选取Parts of line is according to the table below:

倍率Parts of line	1	2	3	4	5	6	7	8	9	10	11	12	13	14
最大起重量/t Max. lifting load	13.5	25.6	37.8	49.7	61.2	72.4	83.2	93.7	103.9	113.8	123.4	132.7	141.7	150

单倍率用于臂端滑轮。

The one part of line is used for boom single top.